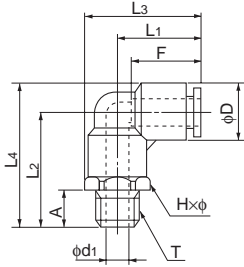
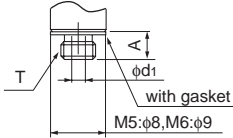


90 degree elbow

●Millimeter size type



M thread

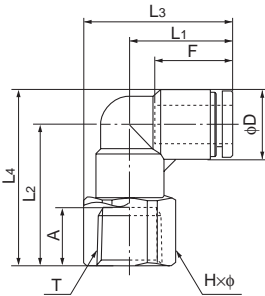


Product number	Applicable tube outer diameter (mm)	T Thread size (M,R)	L ₁ (mm)	L ₂ (mm)	L ₃ (mm)	L ₄ (mm)	A (mm)	F Tube insertion length (mm)	H×φ Width across flat (mm)	D (mm)	d ₁ (mm)	Min. inner diameter (mm)	Effective cross-sectional area (mm ²)	Weight (g)
AL4-M5	4	M5×0.8	17.2	20.2	22.7	25.1	4.0	13	10.0×11.0	9.8	2.0	2.0	3.0	7.0
AL4-R1/8	4	R1/8	17.2	22.7	22.7	27.6	8.0	13	10.0×11.0	9.8	5.0	3.0	4.0	9.0
AL4-R1/4	4	R1/4	17.2	26.7	24.9	31.6	11.0	13	14.0×15.4	9.8	7.0	3.0	4.0	16.0
AL6-M5	6	M5×0.8	18.5	22.7	25.0	29.0	4.0	15	12.0×13.0	12.6	2.0	2.0	3.5	10.0
AL6-M6	6	M6×1.0	18.5	22.7	25.0	29.0	5.0	15	12.0×13.0	12.6	3.0	3.0	4.5	11.0
AL6-R1/8	6	R1/8	18.5	25.2	25.0	31.5	8.0	15	12.0×13.0	12.6	5.0	5.0	12.0	18.0
AL6-R1/4	6	R1/4	18.5	29.2	26.2	35.5	11.0	15	14.0×15.4	12.6	7.0	5.0	12.0	26.0
AL6-R3/8	6	R3/8	18.5	30.2	27.8	36.5	12.0	15	17.0×18.5	12.6	9.0	5.0	12.0	28.0
AL8-R1/8	8	R1/8	20.7	26.2	28.4	33.5	8.0	16	14.0×15.4	14.5	5.0	5.0	18.5	15.0
AL8-R1/4	8	R1/4	20.7	30.2	28.4	37.5	11.0	16	14.0×15.4	14.5	7.0	7.0	23.0	20.0
AL8-R3/8	8	R3/8	20.7	31.2	30.0	38.5	12.0	16	17.0×18.5	14.5	9.0	7.0	23.0	28.0
AL10-R1/8	10	R1/8	24.7	29.2	33.9	38.0	8.0	19	17.0×18.5	17.5	5.0	5.0	22.0	22.0
AL10-R1/4	10	R1/4	24.7	33.2	33.9	42.0	11.0	19	17.0×18.5	17.5	7.0	7.0	34.5	27.0
AL10-R3/8	10	R3/8	24.7	34.2	33.9	43.0	12.0	19	17.0×18.5	17.5	9.0	9.0	37.0	33.0
AL10-R1/2	10	R1/2	24.7	38.2	36.9	47.0	15.0	19	22.0×24.5	17.5	12.0	9.0	37.0	52.0
AL12-R1/4	12	R1/4	26.3	35.7	36.8	45.7	11.0	20	19.0×21.0	20.0	7.0	7.0	36.0	34.0
AL12-R3/8	12	R3/8	26.3	36.7	36.8	46.7	12.0	20	19.0×21.0	20.0	9.0	9.0	43.0	39.0
AL12-R1/2	12	R1/2	26.3	40.7	38.6	50.7	15.0	20	22.0×24.5	20.0	12.0	10.0	43.0	56.0
AL16-R3/8	16	R3/8	34.9	45.0	48.4	58.8	12.0	27	24.0×27.0	28.0	11.0	11.0	70.0	70.0
AL16-R1/2	16	R/2	34.9	48.0	48.4	61.8	15.0	27	24.0×27.0	28.0	12.0	12.0	93.0	84.0

*Made to order

90 degree internal elbow

●Millimeter size type



Product number	Applicable tube outer diameter (mm)	T Thread size (Rc)	L ₁ (mm)	L ₂ (mm)	L ₃ (mm)	L ₄ (mm)	A (mm)	F Tube insertion length (mm)	H×φ Width across flat (mm)	D (mm)	Min. inner diameter (mm)	Effective cross-sectional area (mm ²)	Weight (g)
AFL4-R1/8	4	Rc1/8	17.2	21.7	24.9	22.1	8.0	13	14.0×15.4	9.8	3.0	—	—
AFL6-R1/8	6	Rc1/8	18.5	24.2	26.2	30.5	8.0	15	14.0×15.4	12.6	5.0	—	15.0
AFL6-R1/4	6	Rc1/4	18.5	28.2	27.8	34.5	12.0	15	17.0×18.5	12.6	5.0	—	23.0
AFL6-R3/8	6	Rc3/8	18.5	28.7	30.8	35.0	12.5	15	22.0×24.5	12.6	5.0	—	37.0
AFL8-R1/8	8	Rc1/8	20.7	25.2	28.4	32.5	8.0	16	14.0×15.4	14.6	7.0	—	17.0
AFL8-R1/4	8	Rc1/4	20.7	29.2	30.0	36.5	12.0	16	17.0×18.5	14.6	7.0	—	25.0
AFL8-R3/8	8	Rc3/8	20.7	29.7	33.0	37.0	12.5	16	22.0×24.5	14.6	7.0	—	38.0
AFL10-R1/4	10	Rc1/4	24.7	32.2	34.0	41.0	12.0	19	17.0×18.5	17.5	9.0	—	29.0
AFL10-R3/8	10	Rc3/8	24.7	33.7	37.0	42.5	12.5	19	22.0×24.5	17.5	9.0	—	45.0
AFL12-R3/8	12	Rc3/8	26.3	36.2	38.6	46.2	12.5	20	22.0×24.5	20.0	10.0	—	49.0
AFL12-R1/2	12	Rc1/2	26.3	39.2	39.6	49.2	15.5	20	24.0×26.5	20.0	10.0	—	54.0