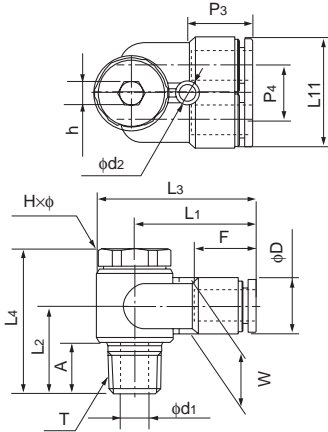


## Universal branch elbow

### ●Millimeter size type



Product number	Applicable tube outer diameter (mm)	T Thread size (R)	L <sub>1</sub> (mm)	L <sub>2</sub> (mm)	L <sub>3</sub> (mm)	L <sub>4</sub> (mm)	L <sub>11</sub> (mm)	A (mm)	F Tube insertion length (mm)	H×φ Width across flat (mm)	h Width across flat (mm)	P <sub>3</sub> (mm)	P <sub>4</sub> (mm)	W (mm)	D (mm)	d <sub>1</sub> (mm)	d <sub>2</sub> (mm)	Effective cross-sectional area (mm <sup>2</sup> )	Weight (g)
ALYB6-R1/8	6	R1/8	26.1	17.5	33.1	30.0	24.8	8.0	15	13.0×14.0	5.0	14.8	12.2	12.6	12.6	5.0	4.2	—	25.0
ALYB6-R1/4	6	R1/4	29.0	22.9	38.7	37.5	24.8	11.0	15	17.0×18.3	6.0	14.8	12.2	12.6	12.6	7.0	4.2	—	46.0
ALYB8-R1/4	8	R1/4	30.6	22.9	40.3	37.5	28.8	11.0	16	17.0×18.3	6.0	16.4	14.2	14.6	14.6	7.0	4.2	—	—
ALYB8-R3/8	8	R3/8	32.9	22.5	40.5	40.5	28.8	12.0	16	21.0×22.6	8.0	16.4	14.2	14.6	14.6	9.0	4.2	—	—
ALYB10-R1/4	10	R1/4	34.9	23.4	46.9	39.5	35.0	11.0	19	21.0×22.6	8.0	18.4	17.5	17.5	17.5	7.0	4.2	—	—
ALYB10-R3/8	10	R3/8	34.9	24.4	46.9	40.5	35.0	12.0	19	21.0×22.6	8.0	18.4	17.5	17.5	17.5	9.0	4.2	—	—

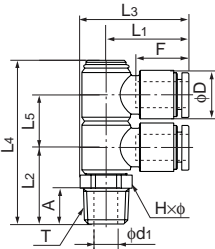


## Double universal elbow

### ●Millimeter size type



Product number	Applicable tube outer diameter (mm)	T Thread size (R)	L <sub>1</sub> (mm)	L <sub>2</sub> (mm)	L <sub>3</sub> (mm)	L <sub>4</sub> (mm)	L <sub>5</sub> (mm)	A (mm)	F Tube insertion length (mm)	H×φ Width across flat (mm)	D (mm)	d <sub>1</sub> (mm)	Effective cross-sectional area (mm <sup>2</sup> )	Weight (g)
ALWB6-R1/8	6	R1/8	22.8	18.8	30.5	42.3	13.5	8.0	15	14.0×15.4	12.6	5.0	—	33.0
ALWB6-R1/4	6	R1/4	22.8	21.8	30.5	45.3	13.5	11.0	15	14.0×15.4	12.6	7.0	—	35.0
ALWB8-R1/4	8	R1/4	24.4	23.0	32.1	50.0	16.0	11.0	16	14.0×15.4	14.6	7.0	—	—
ALWB8-R3/8	8	R3/8	24.4	24.0	32.1	54.0	16.0	12.0	16	17.0×18.5	14.6	9.0	—	—
ALWB10-R1/4	10	R1/4	29.4	24.5	39.1	56.0	19.0	11.0	19	17.0×18.5	17.5	7.0	—	—
ALWB10-R3/8	10	R3/8	29.4	25.5	39.1	57.0	19.0	12.0	19	17.0×18.5	17.5	9.0	—	70.0



## Triple universal elbow

### ●Millimeter size type



Product number	Applicable tube outer diameter (mm)	T Thread size (R)	L <sub>1</sub> (mm)	L <sub>2</sub> (mm)	L <sub>3</sub> (mm)	L <sub>4</sub> (mm)	L <sub>5</sub> (mm)	A (mm)	F Tube insertion length (mm)	H×φ Width across flat (mm)	D (mm)	d <sub>1</sub> (mm)	Effective cross-sectional area (mm <sup>2</sup> )	Weight (g)
ALTB6-R1/8	6	R1/8	22.8	18.8	30.5	55.5	13.5	8.0	15	14.0×15.4	12.6	5.0	—	43.0
ALTB6-R1/4	6	R1/4	22.8	21.8	30.5	58.5	13.5	11.0	15	14.0×15.4	12.6	7.0	—	45.0
ALTB8-R1/4	8	R1/4	24.4	23.0	32.1	66.0	16.0	11.0	16	14.0×15.4	14.6	7.0	—	51.0
ALTB8-R3/8	8	R3/8	24.4	24.0	32.1	67.0	16.0	12.0	16	17.0×18.5	14.6	9.0	—	—
ALTB10-R1/4	10	R1/4	29.4	24.5	39.1	75.5	19.0	11.0	19	17.0×18.5	17.5	7.0	—	—
ALTB10-R3/8	10	R3/8	29.4	25.5	39.1	76.5	19.0	12.0	19	17.0×18.5	17.5	9.0	—	92.0

