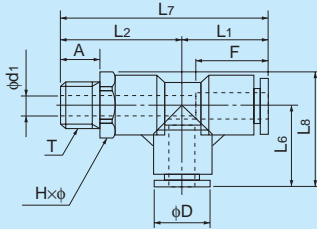


Service tee



●Millimeter size type

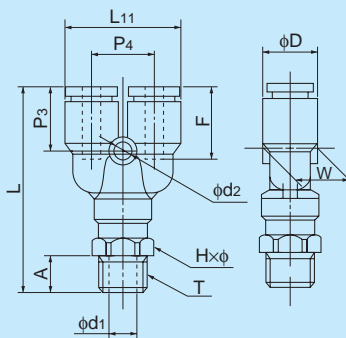
Product number	Applicable tube outer diameter (mm)	T Thread size (R)	L ₁ (mm)	L ₂ (mm)	L ₈ (mm)	L ₇ (mm)	L ₈ (mm)	A (mm)	F Tube insertion length (mm)	H×φ Width across flat (mm)	D (mm)	d ₁ (mm)	Min. inner diameter (mm)	Effective cross-sectional area (mm ²)	Weight (g)
EST4-R1/8-C1	4	R1/8	17.7	23.7	17.7	41.4	23.2	9.0	13	10.0×11.0	10.0	5.0	3.0	4.0	3.0
EST4-R1/4-C1	4	R1/4	17.7	27.7	17.7	45.4	25.4	12.0	13	14.0×15.4	10.0	7.0	3.0	4.0	4.0
EST6-R1/8-C1	6	R1/8	18.9	26.2	18.9	45.1	25.4	9.0	15	12.0×13.0	13.0	4.5	4.5	12.0	5.0
EST6-R1/4-C1	6	R1/4	18.9	30.2	18.9	49.1	26.6	12.0	15	14.0×15.4	13.0	7.0	4.5	12.0	6.0
EST8-R1/8-C1	8	R1/8	21.1	29.2	21.1	50.3	28.8	9.0	16	14.0×15.4	15.0	6.0	6.0	18.5	7.0
EST8-R1/4-C1	8	R1/4	21.1	31.2	21.1	52.3	28.8	12.0	16	14.0×15.4	15.0	6.5	6.5	23.0	8.0
EST10-R1/4-C1	10	R1/4	25.0	37.2	25.0	62.2	34.3	12.0	19	17.0×18.5	18.0	8.0	8.0	34.5	14.0
EST10-R3/8-C1	10	R3/8	25.0	37.2	25.0	62.2	34.3	14.0	19	17.0×18.5	18.0	9.0	8.0	37.0	16.0
EST12-R3/8-C1	12	R3/8	26.7	38.7	26.7	65.4	37.2	14.0	20	19.0×21.0	20.5	10.0	10.0	43.0	19.0
EST12-R1/2-C1	12	R1/2	26.7	41.7	26.7	68.4	38.7	16.0	20	22.0×24.0	20.5	12.0	9.5	43.0	21.0

EST6-N1/8-C1	6	NPT1/8	18.9	26.2	18.9	45.1	25.4	9.0	15	12.0×13.0	13.0	4.5	4.5	12.0	5.0
EST6-N1/4-C1	6	NPT1/4	18.9	30.2	18.9	49.1	26.6	12.0	15	14.0×15.4	13.0	7.0	4.5	12.0	6.0

●Inch size type

Product number	Applicable tube outer diameter (inch)	T Thread size (R)	L ₁ (mm)	L ₂ (mm)	L ₈ (mm)	L ₇ (mm)	L ₈ (mm)	A (mm)	F Tube insertion length (mm)	H×φ Width across flat (mm)	D (mm)	d ₁ (mm)	Min. inner diameter (mm)	Effective cross-sectional area (mm ²)	Weight (g)
EST1/4-R1/8-C1	1/4	R1/8	19.9	26.2	19.9	46.1	26.4	9.0	15	12.0×13.0	13.0	4.5	4.5	13.0	5.0
EST1/4-R1/4-C1	1/4	R1/4	19.9	30.2	19.9	50.1	27.6	12.0	15	14.0×15.4	13.0	7.0	4.5	13.0	6.0
EST3/8-R1/4-C1	3/8	R1/4	25.8	37.2	25.8	63.0	35.1	12.0	19	17.0×18.5	18.0	8.0	8.0	30.0	14.0
EST3/8-R3/8-C1	3/8	R3/8	25.8	37.2	25.8	63.0	35.1	14.0	19	17.0×18.5	18.0	9.0	8.0	32.0	16.0
EST1/2-R3/8-C1	1/2	R3/8	29.7	39.0	29.7	68.4	40.2	14.0	21	19.0×21.0	21.5	10.0	10.0	53.0	19.0
EST1/2-R1/2-C1	1/2	R1/2	29.7	42.0	29.7	71.4	41.7	16.0	21	22.0×24.0	21.5	12.0	9.5	55.5	21.0

Y joint



●Millimeter size type

Product number	Applicable tube outer diameter (mm)	T Thread size (R)	L (mm)	L ₁₁ (mm)	A (mm)	F Tube insertion length (mm)	H×φ Width across flat (mm)	P ₃ (mm)	P ₄ (mm)	W (mm)	D (mm)	d ₁ (mm)	d ₂ (mm)	Min. inner diameter (mm)	Effective cross-sectional area (mm ²)	Weight (g)
EY4-R1/8-C1	4	R1/8	41.9	20.7	9.0	14	10.0×11.0	13.9	11.0	9.7	10.0	5.0	3.2	3.0	3.5	4.0
EY4-R1/4-C1	4	R1/4	45.9	20.7	12.0	14	14.0×15.4	13.9	11.0	9.7	10.0	7.0	3.2	3.0	3.5	5.0
EY6-R1/8-C1	6	R1/8	45.2	24.7	9.0	15	12.0×13.0	15.2	12.2	12.5	13.0	4.5	4.2	4.5	9.0	6.0
EY6-R1/4-C1	6	R1/4	49.2	24.7	12.0	15	14.0×15.4	15.2	12.2	12.5	13.0	7.0	4.2	4.5	9.0	7.0
EY8-R1/8-C1	8	R1/8	50.3	28.7	9.0	16	14.0×15.4	16.8	14.2	14.5	15.0	6.0	4.2	6.0	17.5	8.0
EY8-R1/4-C1	8	R1/4	52.3	28.7	12.0	16	14.0×15.4	16.8	14.2	14.5	15.0	6.5	4.2	6.5	20.0	9.0
EY10-R1/4-C1	10	R1/4	60.2	35.0	12.0	19	17.0×18.5	18.7	17.5	17.5	18.0	8.0	4.2	8.0	27.5	15.0
EY10-R3/8-C1	10	R3/8	60.2	35.0	14.0	19	17.0×18.5	18.7	17.5	17.5	18.0	9.0	4.2	8.0	28.0	16.0
EY12-R3/8-C1	12	R3/8	64.2	40.0	14.0	20	19.0×21.0	20.7	20.0	20.0	20.5	10.0	4.2	10.0	40.0	22.0
EY12-R1/2-C1	12	R1/2	67.2	40.0	16.0	20	22.0×24.0	20.7	20.0	20.0	20.5	12.0	4.2	9.5	40.0	23.0

EY6-N1/8-C1	6	NPT1/8	45.2	24.7	9.0	15	12.0×13.0	15.2	12.2	12.5	13.0	4.5	4.2	4.5	9.0	6.0
EY6-N1/4-C1	6	NPT1/4	49.2	24.7	12.0	15	14.0×15.4	15.2	12.2	12.5	13.0	7.0	4.2	4.5	9.0	7.0

●Inch size type

Product number	Applicable tube outer diameter (inch)	T Thread size (R)	L (mm)	L ₁₁ (mm)	A (mm)	F Tube insertion length (mm)	H×φ Width across flat (mm)	P ₃ (mm)	P ₄ (mm)	W (mm)	D (mm)	d ₁ (mm)	d ₂ (mm)	Min. inner diameter (mm)	Effective cross-sectional area (mm ²)	Weight (g)
EY1/4-R1/8-C1	1/4	R1/8	46.2	24.7	9.0	16	12.0×13.0	16.2	12.2	12.5	13.0	4.5	4.2	4.5	10.5	6.0
EY1/4-R1/4-C1	1/4	R1/4	50.2	24.7	12.0	16	14.0×15.4	16.2	12.2	12.5	13.0	7.0	4.2	4.5	10.5	7.0
EY3/8-R1/4-C1	3/8	R1/4	61.0	35.0	12.0	20	17.0×18.5	19.5	17.5	17.5	18.0	8.0	4.2	8.0	26.0	15.0
EY3/8-R3/8-C1	3/8	R3/8	61.0	35.0	14.0	20	17.0×18.5	19.5	17.5	17.5	18.0	9.0	4.2	8.0	26.0	16.0
EY1/2-R3/8-C1	1/2	R3/8	67.7	42.0	14.0	23	19.0×21.0	22.7	21.0	21.0	21.5	10.0	4.2	10.0	48.0	22.0
EY1/2-R1/2-C1	1/2	R1/2	70.7	42.0	16.0	23	22.0×24.0	22.7	21.0	21.0	21.5	12.0	4.2	9.5	48.0	23.0