

PushOne® E Series Mini type

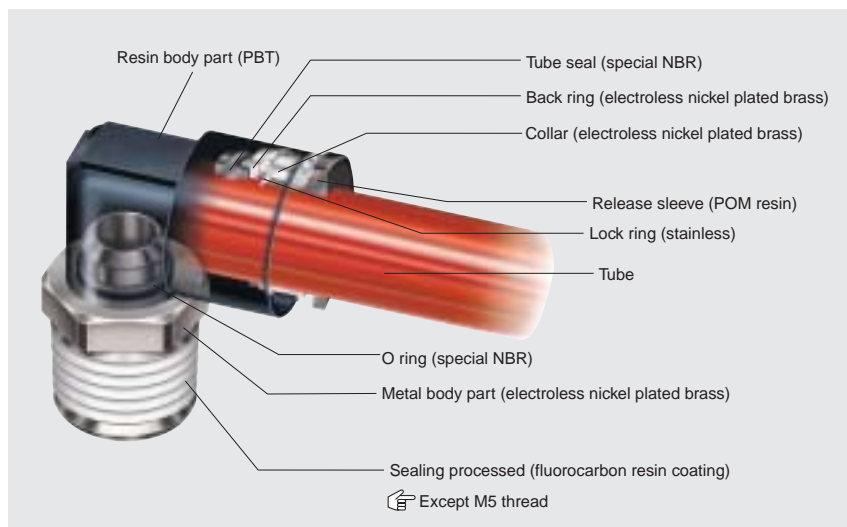
PushOne® fittings for general air pressure

Features

- **PushOne® connection of tube**
The tubes can be connected without using a jig or tools
- **Electroless nickel plated**
Preventing degradation of surface and dissolution of copper ions into fluid
- **Compact body**
Suitable for narrow piping or compact design equipment
- **Sealing-processed R thread.**
Sealing tape is not required.



Cross-sectional structure diagram



Operating fluid, working temperature range

Operating fluid	Working temperature range
Air	-20°C~+80°C

See "Combination List of Tube and Fitting" on page 8.

Pressure condition

Maximum working pressure: 1.0MPa
Negative pressure performance: -99.975kPa

Handling instructions

Caution When the working conditions of tubes and fittings differ, use them under the lower specified conditions.

Caution Do not bend the pipe sharply near the tube insertion port of the fitting. Keep the tube straight for twice as long as the tube diameter from the insertion port.

See page 34 for the common handling instructions for tube fittings.

Product number example

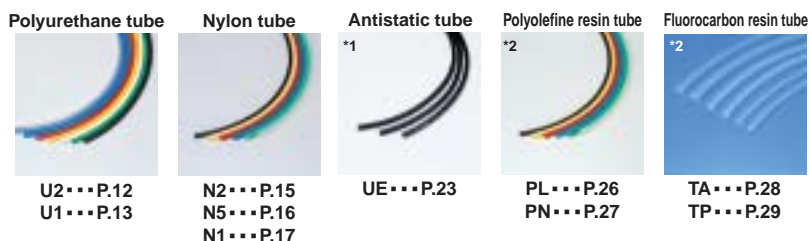
EL 6 - R1/8 - M

Mini type
Thread size
Applicable tube outer diameter
Shape

Size comparison of mini types



Applicable tube



(*1) When the PushOne E series of the Mini type is used with a UE tube, choose a metal body type including a connector and a hexagonal socket to maintain conductivity between the tube and the fittings.

(*2) Combinatory use of PL, PN, TA or TP tube and PushOne E series of the Mini type mixes general and clean type performances. When using them in a clean environment, pay attention to the clean level that could be lowered.

Allied products and product introduction

Speed controller



P.144

Off tool



P.169

Reference

Instruction manual.....P.180

Effective cross-sectional area.....P.178

Negative-pressure performance list.....P.179

Shape list

Connector
EC*-M



P.68

Hexagon socket connector
EC*-A-M



P.68

90 degree elbow
EL*-M



P.68

90 degree long elbow
ELL*-M



P.69

Tee
ET*-M



P.69

Service tee
EST*-M



P.69

Y joint
EY*-M



P.70

Union connector
EUC*-M



P.70

90 degree union elbow
EUL*-M



P.70

Union tee
EUT*-M



P.71

Y union
EYB*-M



P.71

Blank plug
BC



P.65

Nipple
EN



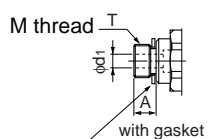
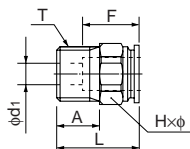
P.65

Connector

●Millimeter size type



Product number	Applicable tube outer diameter (mm)	T Thread size (M,R)	L (mm)	A (mm)	F Tube insertion length (mm)	H×φ Width across flat (mm)	d ₁ Min. inner diameter (mm)	Effective cross-sectional area (mm ²)	Weight (g)
EC3-M3-M	3	M3×0.5	13.0	3.0	9	5.5×6.0	1.5	2.0	2.0
EC3-M5-M	3	M5×0.8	14.0	3.5	9	7.0×7.7	2.0	2.5	3.2
EC4-M3-M	4	M3×0.5	14.2	3.0	10	8.0×8.8	1.5	2.0	4.0
EC4-M5-M	4	M5×0.8	14.2	3.5	10	8.0×8.8	2.5	3.5	4.0
EC4-R1/8-M	4	R1/8	14.0	7.3	10	10.0×11.0	2.5	4.0	5.4
EC6-M5-M	6	M5×0.8	15.2	3.5	11	10.0×11.0	2.5	4.5	3.6
EC6-R1/8-M	6	R1/8	16.7	7.3	11	10.0×11.0	4.0	9.0	5.6

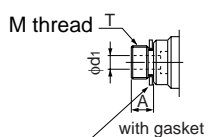
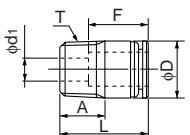


Hexagon socket connector

●Millimeter size type



Product number	Applicable tube outer diameter (mm)	T Thread size (M,R)	L (mm)	A (mm)	F Tube insertion length (mm)	h Width across flat (mm)	D (mm)	d ₁ Min. inner diameter (mm)	Effective cross-sectional area (mm ²)	Weight (g)
EC3-M3A-M	3	M3×0.5	13.0	3.0	9	1.5	5.5	1.5	2.0	2.0
EC3-M5A-M	3	M5×0.8	14.0	3.5	9	2.0	7.0	2.0	2.5	3.2
EC4-M3A-M	4	M3×0.5	14.0	3.0	10	1.5	7.8	1.5	2.0	4.0
EC4-M5A-M	4	M5×0.8	14.0	3.5	10	2.5	7.8	2.5	3.5	4.0
EC4-R1/8A-M	4	R1/8	13.8	7.3	10	2.5	10.0	2.5	4.0	5.4
EC6-M5A-M	6	M5×0.8	15.2	3.5	11	2.5	9.8	2.5	4.5	3.6
EC6-R1/8A-M	6	R1/8	16.7	7.3	11	4.0	10.0	4.0	9.0	5.6

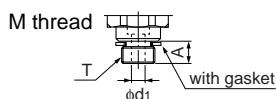
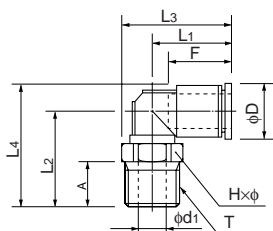


90 degree elbow

●Millimeter size type



Product number	Applicable tube outer diameter (mm)	T Thread size (M,R)	L ₁ (mm)	L ₂ (mm)	L ₃ (mm)	L ₄ (mm)	A (mm)	F Tube insertion length (mm)	H×φ Width across flat (mm)	D (mm)	d ₁ (mm)	Min. inner diameter (mm)	Effective cross-sectional area (mm ²)	Weight (g)
EL3-M3-M	3	M3×0.5	10.7	12.0	13.7	15.0	3.0	9	5.5×6.0	6.3	1.5	1.5	1.5	1.2
EL3-M5-M	3	M5×0.8	10.7	13.0	14.5	16.0	3.5	9	7.0×7.7	6.3	2.5	1.5	1.5	2.3
EL4-M3-M	4	M3×0.5	12.0	12.5	16.4	16.4	3.0	10	8.0×8.8	8.0	1.5	1.5	2.0	2.3
EL4-M5-M	4	M5×0.8	12.0	13.0	16.4	16.9	3.5	10	8.0×8.8	8.0	2.5	2.5	3.5	2.8
EL4-R1/8-M	4	R1/8	12.0	16.0	17.5	19.9	8.0	10	10.0×11.0	8.0	5.0	3.0	4.0	6.4
EL6-M5-M	6	M5×0.8	13.7	14.0	18.1	18.9	3.5	11	8.0×8.8	10.2	2.5	2.5	4.5	3.4
EL6-R1/8-M	6	R1/8	13.7	17.0	19.2	21.9	8.0	11	10.0×11.0	10.2	5.0	4.0	8.0	6.9

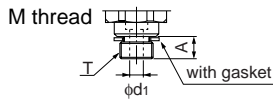
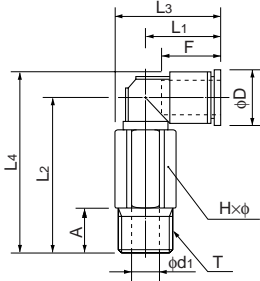


90 degree long elbow

●Millimeter size type



Product number	Applicable tube outer diameter (mm)	T Thread size (M,R)	L1 (mm)	L2 (mm)	L3 (mm)	L4 (mm)	A (mm)	F Tube insertion length (mm)	H×φ Width across flat (mm)	D (mm)	d1 (mm)	Min. inner diameter (mm)	Effective cross-sectional area (mm ²)	Weight (g)
ELL3-M3-M	3	M3×0.5	10.7	20.0	13.7	23.0	3.0	9	5.5×6.0	6.3	1.5	1.5	1.5	9.7
ELL3-M5-M	3	M5×0.8	10.7	21.0	14.5	24.0	3.5	9	7.0×7.7	6.3	2.5	1.5	1.5	10.8
ELL4-M3-M	4	M3×0.5	12.0	24.5	16.4	28.4	3.0	10	8.0×8.8	8.0	1.5	1.5	2.0	10.8
ELL4-M5-M	4	M5×0.8	12.0	25.0	16.4	28.9	3.5	10	8.0×8.8	8.0	2.5	2.5	3.5	11.3
ELL4-R1/8-M	4	R1/8	12.0	28.0	17.5	31.9	8.0	10	10.0×11.0	8.0	5.0	3.0	4.0	14.9
ELL6-M5-M	6	M5×0.8	13.7	26.0	18.1	30.9	3.5	11	8.0×8.8	10.2	2.5	2.5	4.5	11.9
ELL6-R1/8-M	6	R1/8	13.7	29.0	19.2	33.9	8.0	11	10.0×11.0	10.2	5.0	4.0	8.0	15.4

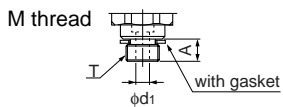
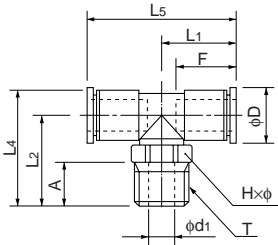


Tee

●Millimeter size type



Product number	Applicable tube outer diameter (mm)	T Thread size (M,R)	L1 (mm)	L2 (mm)	L4 (mm)	L5 (mm)	A (mm)	F Tube insertion length (mm)	H×φ Width across flat (mm)	D (mm)	d1 (mm)	Min. inner diameter (mm)	Effective cross-sectional area (mm ²)	Weight (g)
ET3-M3-M	3	M3×0.5	10.7	12.0	15.0	21.3	3.0	9	5.5×6.0	6.3	1.5	1.5	1.5	1.5
ET3-M5-M	3	M5×0.8	10.7	13.0	16.0	21.3	3.5	9	7.0×7.7	6.3	2.5	1.5	1.5	2.6
ET4-M3-M	4	M3×0.5	12.5	12.5	16.4	25.0	3.0	10	8.0×8.8	8.0	1.5	1.5	2.0	2.8
ET4-M5-M	4	M5×0.8	12.5	13.0	16.9	25.0	3.5	10	8.0×8.8	8.0	2.5	2.5	3.5	3.3
ET4-R1/8-M	4	R1/8	12.5	16.0	19.9	25.0	8.0	10	10.0×11.0	8.0	5.0	3.0	4.0	6.9
ET6-M5-M	6	M5×0.8	14.2	14.0	18.9	28.4	3.5	11	8.0×8.8	10.2	2.5	2.5	4.5	4.3
ET6-R1/8-M	6	R1/8	14.2	17.0	21.9	28.4	8.0	11	10.0×11.0	10.2	5.0	4.0	8.0	7.9

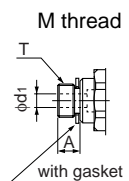
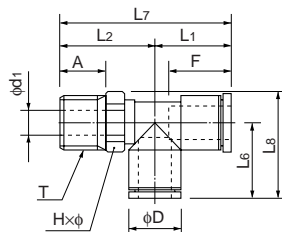


Service tee

●Millimeter size type



Product number	Applicable tube outer diameter (mm)	T Thread size (M,R)	L1 (mm)	L2 (mm)	L6 (mm)	L7 (mm)	L8 (mm)	A (mm)	F Tube insertion length (mm)	H×φ Width across flat (mm)	D (mm)	d1 (mm)	Min. inner diameter (mm)	Effective cross-sectional area (mm ²)	Weight (g)
EST3-M3-M	3	M3×0.5	10.7	12.0	10.7	22.7	13.7	3.0	9	5.5×6.0	6.3	1.5	1.5	1.5	1.5
EST3-M5-M	3	M5×0.8	10.7	13.0	10.7	23.7	14.6	3.5	9	7.0×7.7	6.3	2.5	1.5	1.5	2.6
EST4-M3-M	4	M3×0.5	12.5	12.5	12.5	25.0	16.9	3.0	10	8.0×8.8	8.0	1.5	1.5	2.0	2.8
EST4-M5-M	4	M5×0.8	12.5	13.0	12.5	25.5	16.9	3.5	10	8.0×8.8	8.0	2.5	2.5	3.5	3.3
EST4-R1/8-M	4	R1/8	12.5	16.0	12.5	28.5	18.0	8.0	10	10.0×11.0	8.0	5.0	3.0	4.0	6.9
EST6-M5-M	6	M5×0.8	14.2	14.0	14.2	28.2	19.1	3.5	11	8.0×8.8	10.2	2.5	2.5	4.5	4.4
EST6-R1/8-M	6	R1/8	14.2	17.0	14.2	31.2	19.7	8.0	11	10.0×11.0	10.2	5.0	4.0	8.0	7.9

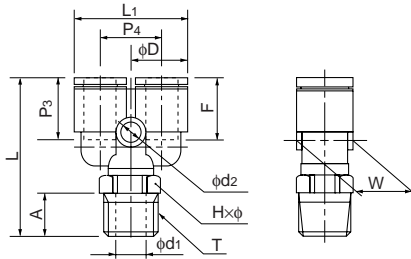


Y joint

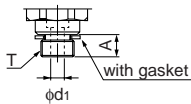


●Millimeter size type

Product number	Applicable tube outer diameter (mm)	T Thread size (M,R)	L (mm)	L ₁ (mm)	A (mm)	F Tube insertion length (mm)	H×φ Width across flat (mm)	P ₃ (mm)	P ₄ (mm)	W (mm)	D (mm)	d ₁ (mm)	d ₂ (mm)	Min. inner diameter (mm)	Effective cross-sectional area (mm ²)	Weight (g)
EY4-M3-M	4	M3×0.5	24.2	16.7	3.0	10	8.0×8.8	9.0	9.0	8.0	8.0	1.5	3.2	1.5	1.5	3.0
EY4-M5-M	4	M5×0.8	24.7	16.7	3.5	10	8.0×8.8	9.0	9.0	8.0	8.0	2.5	3.2	2.5	2.5	4.5
EY4-R1/8-M	4	R1/8	27.7	16.7	8.0	10	10.0×11.0	9.0	9.0	8.0	8.0	5.0	3.2	3.0	2.5	8.2
EY6-M5-M	6	M5×0.8	26.7	20.7	3.5	11	8.0×8.8	10.2	11.0	10.0	10.2	2.5	3.2	2.5	4.0	4.7
EY6-R1/8-M	6	R1/8	29.7	20.7	8.0	11	10.0×11.0	10.2	11.0	10.0	10.2	5.0	3.2	4.0	5.0	8.2



M thread

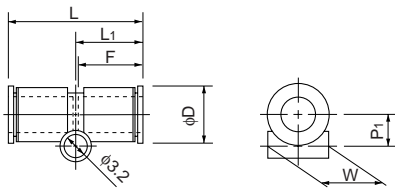


Union connector



●Millimeter size type

Product number	Applicable tube outer diameter (mm)	L ₁ (mm)	L ₂ (mm)	P ₁ (mm)	F Tube insertion length (mm)	D (mm)	W (mm)	Min. inner diameter (mm)	Effective cross-sectional area (mm ²)	Weight (g)
EUC3-M	3	19.4	9.7	3.6	9	6.3	6.0	2.0	2.5	0.7
EUC4-M	4	20.5	10.3	4.5	10	8.0	8.0	3.0	4.0	2.0
EUC6-M	6	22.9	11.5	5.4	11	10.2	10.0	4.0	8.5	2.2

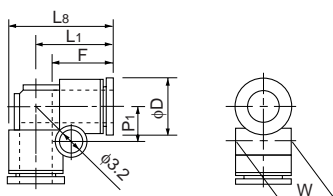


90 degree union elbow



●Millimeter size type

Product number	Applicable tube outer diameter (mm)	L ₁ (mm)	L ₂ (mm)	P ₁ (mm)	F Tube insertion length (mm)	D (mm)	W (mm)	Min. inner diameter (mm)	Effective cross-sectional area (mm ²)	Weight (g)
EUL3-M	3	10.7	13.7	4.1	9	6.3	6.0	2.0	2.0	0.8
EUL4-M	4	12.5	16.4	5.0	10	8.0	8.0	3.0	3.5	2.4
EUL6-M	6	14.2	19.1	6.5	11	10.2	10.0	4.0	8.0	2.4

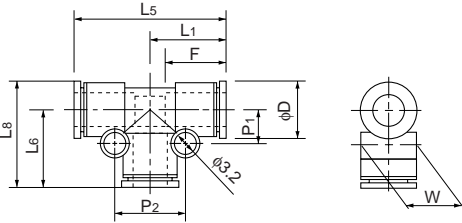


Union tee



●Millimeter size type

Product number	Applicable tube outer diameter (mm)	L ₁ (mm)	L ₅ (mm)	L ₆ (mm)	L ₈ (mm)	P ₁ (mm)	P ₂ (mm)	F Tube insertion length (mm)	D (mm)	W (mm)	Min. inner diameter (mm)	Effective cross-sectional area (mm ²)	Weight (g)
EUT3-M	3	10.7	21.4	10.7	13.7	4.1	8.2	9	6.3	6.0	2.0	2.0	1.2
EUT4-M	4	12.5	25.0	12.5	16.4	5.0	10.0	10	8.0	8.0	3.0	3.5	3.4
EUT6-M	6	14.2	28.4	14.2	19.1	6.5	13.0	11	10.2	10.0	4.0	8.0	3.5

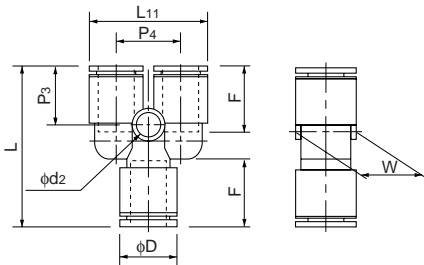


Y union



●Millimeter size type

Product number	Applicable tube outer diameter (mm)	L (mm)	L ₁₁ (mm)	F Tube insertion length (mm)	P ₃ (mm)	P ₄ (mm)	W (mm)	D (mm)	d ₂ (mm)	Min. inner diameter (mm)	Effective cross-sectional area (mm ²)	Weight (g)
EYB3-M	3	21.9	13.0	9	9.0	7.0	6.0	6.3	2.0	2.0	2.0	1.2
EYB4-M	4	24.0	16.7	10	9.0	9.0	8.0	8.0	3.2	3.0	2.0	3.4
EYB6-M	6	27.4	20.7	11	10.2	11.0	10.0	10.2	3.2	4.0	8.0	3.5



Blank plug



See the PushOne E series (P.65) for the product number and part sizes.

Nipple



See the PushOne E series (P.65) for the product number and part sizes.