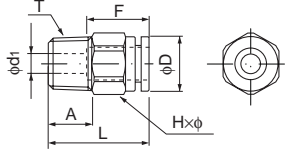


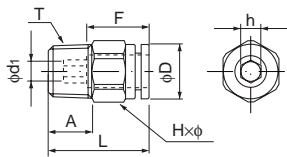
Connector



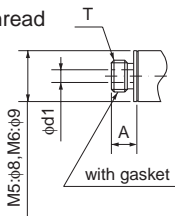
Millimeter size type



Inch size type



M thread



●Millimeter size type

Product number	Applicable tube outer diameter (mm)	T Thread size (M,R)	L (mm)	A (mm)	F Tube insertion length (mm)	H×φ Width across flat (mm)	D (mm)	d ₁ (mm)	Effective cross-sectional area (mm ²)	Weight (g)
EC4-M5	4	M5×0.8	22.4	4.0	13	10.0×11.0	9.6	2.0	3.0	6.0
EC4-PT1/8	4	R1/8	19.4	8.0	13	10.0×11.0	9.6	2.5	4.0	7.0
EC4-PT1/4	4	R1/4	22.4	11.0	13	14.0×15.4	9.6	2.5	4.0	17.0
EC6-M5	6	M5×0.8	24.2	4.0	15	12.0×13.0	11.7	2.0	3.5	9.0
EC6-M6	6	M6×1.0	25.2	5.0	15	12.0×13.0	11.7	3.0	4.5	10.0
EC6-PT1/8	6	R1/8	21.2	8.0	15	12.0×13.0	11.7	4.0	10.5	9.0
EC6-PT1/4	6	R1/4	24.2	11.0	15	14.0×15.4	11.7	4.0	10.5	18.0
EC6-PT3/8	6	R3/8	25.2	12.0	15	17.0×18.5	11.7	4.0	10.5	32.0
EC8-PT1/8	8	R1/8	26.2	8.0	16	14.0×15.4	13.7	5.0	20.0	14.0
EC8-PT1/4	8	R1/4	25.2	11.0	16	14.0×15.4	13.7	6.0	25.0	16.0
EC8-PT3/8	8	R3/8	26.2	12.0	16	17.0×18.5	13.7	6.0	26.0	29.0
EC10-PT1/8	10	R1/8	30.1	8.0	19	17.0×18.5	16.7	5.0	25.0	24.0
EC10-PT1/4	10	R1/4	28.1	11.0	19	17.0×18.5	16.7	8.0	40.0	21.0
EC10-PT3/8	10	R3/8	29.1	12.0	19	17.0×18.5	16.7	8.0	40.0	29.0
EC10-PT1/2	10	R1/2	32.1	15.0	19	22.0×24.5	16.7	8.0	40.0	61.0
EC12-PT1/4	12	R1/4	34.0	11.0	20	19.0×21.0	18.6	8.0	45.0	32.0
EC12-PT3/8	12	R3/8	30.0	12.0	20	19.0×21.0	18.6	10.0	50.0	31.0
EC12-PT1/2	12	R1/2	33.0	15.0	20	22.0×24.5	18.6	10.0	50.0	58.0
EC16-PT3/8	16	R3/8	41.6	12.0	27	24.0×26.5	24.5	10.0	77.0	68.0
EC16-PT1/2	16	R1/2	43.6	15.0	27	24.0×26.5	24.5	12.0	110.5	83.0

*Made to order

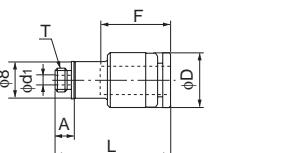
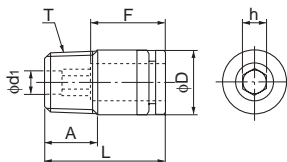
●Inch size type

Product number	Applicable tube outer diameter (inch)	T Thread size (M,R)	L (mm)	A (mm)	F Tube insertion length (mm)	H×φ Width across flat (mm)	h Width across flat (mm)	D (mm)	d ₁ (mm)	Effective cross-sectional area (mm ²)	Weight (g)
EC1/4-M5	1/4	M5×0.8	24.4	4.0	15	12.0×13.0	4.0	12.0	2.0	3.5	9.0
EC1/4-PT1/8	1/4	R1/8	21.4	8.0	15	12.0×13.0	4.0	12.0	4.0	12.0	9.0
EC1/4-PT1/4	1/4	R1/4	24.4	11.0	15	14.0×15.4	4.0	12.0	4.0	12.0	18.0
EC1/4-PT3/8	1/4	R3/8	25.4	12.0	15	17.0×18.5	4.0	12.0	4.0	12.0	32.0
EC5/16-PT1/8	5/16	R1/8	25.9	8.0	16	14.0×15.4	5.0	13.9	5.0	20.0	14.0
EC5/16-PT1/4	5/16	R1/4	24.9	11.0	16	14.0×15.4	6.0	13.9	6.0	25.0	16.0
EC5/16-PT3/8	5/16	R3/8	25.9	12.0	16	17.0×18.5	6.0	13.9	6.0	26.0	29.0
EC3/8-PT1/8	3/8	R1/8	29.7	8.0	19	17.0×18.5	—	16.9	5.0	20.0	24.0
EC3/8-PT1/4	3/8	R1/4	27.7	11.0	19	17.0×18.5	—	16.9	8.0	35.0	21.0
EC3/8-PT3/8	3/8	R3/8	28.7	12.0	19	17.0×18.5	—	16.9	8.0	35.0	29.0
EC3/8-PT1/2	3/8	R1/2	31.7	15.0	19	22.0×24.5	—	16.9	8.0	35.0	61.0
EC1/2-PT1/4	1/2	R1/4	34.0	11.0	21	19.0×21.0	—	19.0	8.0	48.0	32.0
EC1/2-PT3/8	1/2	R3/8	30.0	12.0	21	19.0×21.0	—	19.0	10.0	66.5	31.0
EC1/2-PT1/2	1/2	R1/2	33.0	15.0	21	22.0×24.5	—	19.0	10.0	66.5	58.0

☞ The inch size type is not plated.

Hexagon socket connector

●Millimeter size type



Product number	Applicable tube outer diameter (mm)	T Thread size (M,R)	L (mm)	A (mm)	F Tube insertion length (mm)	h Width across flat (mm)	D (mm)	d ₁ (mm)	Effective cross-sectional area (mm ²)	Weight (g)
EC4-M5A	4	M5×0.8	19.4	4.0	13	2.0	9.8	2.0	—	5.0
EC4-PT1/8A	4	R1/8	19.4	8.0	13	2.5	9.8	2.5	—	7.0
EC6-M5A	6	M5×0.8	24.2	4.0	15	4.0	11.8	2.0	—	—
EC6-PT1/8A	6	R1/8	21.2	8.0	15	4.0	11.8	4.0	—	8.0
EC6-PT1/4A	6	R1/4	24.2	11.0	15	4.0	13.8	4.0	—	17.0
EC8-PT1/8A	8	R1/8	26.2	8.0	16	5.0	13.8	5.0	—	12.0
EC8-PT1/4A	8	R1/4	25.2	11.0	16	5.0	13.8	5.0	—	15.0
EC10-PT1/4A	10	R1/4	28.1	11.0	19	6.0	16.8	6.0	—	19.0
EC10-PT3/8A	10	R3/8	29.1	12.0	19	6.0	16.8	6.0	—	28.0