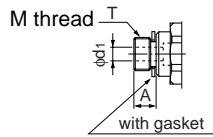
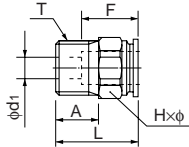


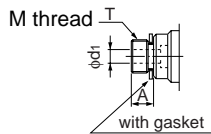
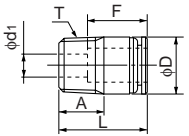
## Connector



### ●Millimeter size type

Product number	Applicable tube outer diameter (mm)	T Thread size (M,R)	L (mm)	A (mm)	F Tube insertion length (mm)	H×φ Width across flat (mm)	d <sub>1</sub> Min. inner diameter (mm)	Effective cross-sectional area (mm <sup>2</sup> )	Weight (g)
EC3-M3-M	3	M3×0.5	13.0	3.0	9	5.5×6.0	1.5	2.0	2.0
EC3-M5-M	3	M5×0.8	14.0	3.5	9	7.0×7.7	2.0	2.5	3.2
EC4-M3-M	4	M3×0.5	14.2	3.0	10	8.0×8.8	1.5	2.0	4.0
EC4-M5-M	4	M5×0.8	14.2	3.5	10	8.0×8.8	2.5	3.5	4.0
EC4-R1/8-M	4	R1/8	14.0	7.3	10	10.0×11.0	2.5	4.0	5.4
EC6-M5-M	6	M5×0.8	15.2	3.5	11	10.0×11.0	2.5	4.5	3.6
EC6-R1/8-M	6	R1/8	16.7	7.3	11	10.0×11.0	4.0	9.0	5.6

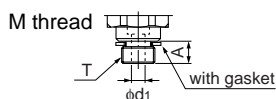
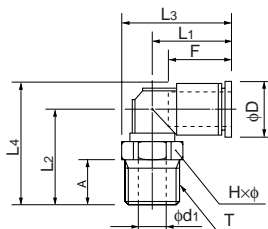
## Hexagon socket connector



### ●Millimeter size type

Product number	Applicable tube outer diameter (mm)	T Thread size (M,R)	L (mm)	A (mm)	F Tube insertion length (mm)	h Width across flat (mm)	D (mm)	d <sub>1</sub> Min. inner diameter (mm)	Effective cross-sectional area (mm <sup>2</sup> )	Weight (g)
EC3-M3A-M	3	M3×0.5	13.0	3.0	9	1.5	5.5	1.5	2.0	2.0
EC3-M5A-M	3	M5×0.8	14.0	3.5	9	2.0	7.0	2.0	2.5	3.2
EC4-M3A-M	4	M3×0.5	14.0	3.0	10	1.5	7.8	1.5	2.0	4.0
EC4-M5A-M	4	M5×0.8	14.0	3.5	10	2.5	7.8	2.5	3.5	4.0
EC4-R1/8A-M	4	R1/8	13.8	7.3	10	2.5	10.0	2.5	4.0	5.4
EC6-M5A-M	6	M5×0.8	15.2	3.5	11	2.5	9.8	2.5	4.5	3.6
EC6-R1/8A-M	6	R1/8	16.7	7.3	11	4.0	10.0	4.0	9.0	5.6

## 90 degree elbow



### ●Millimeter size type

Product number	Applicable tube outer diameter (mm)	T Thread size (M,R)	L <sub>1</sub> (mm)	L <sub>2</sub> (mm)	L <sub>3</sub> (mm)	L <sub>4</sub> (mm)	A (mm)	F Tube insertion length (mm)	H×φ Width across flat (mm)	D (mm)	d <sub>1</sub> (mm)	Min. inner diameter (mm)	Effective cross-sectional area (mm <sup>2</sup> )	Weight (g)
EL3-M3-M	3	M3×0.5	10.7	12.0	13.7	15.0	3.0	9	5.5×6.0	6.3	1.5	1.5	1.5	1.2
EL3-M5-M	3	M5×0.8	10.7	13.0	14.5	16.0	3.5	9	7.0×7.7	6.3	2.5	1.5	1.5	2.3
EL4-M3-M	4	M3×0.5	12.0	12.5	16.4	16.4	3.0	10	8.0×8.8	8.0	1.5	1.5	2.0	2.3
EL4-M5-M	4	M5×0.8	12.0	13.0	16.4	16.9	3.5	10	8.0×8.8	8.0	2.5	2.5	3.5	2.8
EL4-R1/8-M	4	R1/8	12.0	16.0	17.5	19.9	8.0	10	10.0×11.0	8.0	5.0	3.0	4.0	6.4
EL6-M5-M	6	M5×0.8	13.7	14.0	18.1	18.9	3.5	11	8.0×8.8	10.2	2.5	2.5	4.5	3.4
EL6-R1/8-M	6	R1/8	13.7	17.0	19.2	21.9	8.0	11	10.0×11.0	10.2	5.0	4.0	8.0	6.9