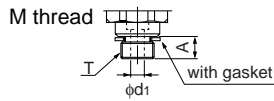
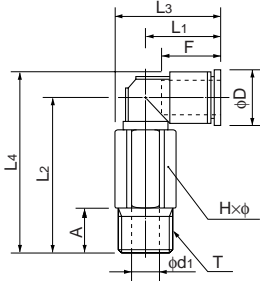


90 degree long elbow

●Millimeter size type



Product number	Applicable tube outer diameter (mm)	T Thread size (M,R)	L ₁ (mm)	L ₂ (mm)	L ₃ (mm)	L ₄ (mm)	A (mm)	F Tube insertion length (mm)	H×φ Width across flat (mm)	D (mm)	d ₁ (mm)	Min. inner diameter (mm)	Effective cross-sectional area (mm ²)	Weight (g)
ELL3-M3-M	3	M3×0.5	10.7	20.0	13.7	23.0	3.0	9	5.5×6.0	6.3	1.5	1.5	1.5	9.7
ELL3-M5-M	3	M5×0.8	10.7	21.0	14.5	24.0	3.5	9	7.0×7.7	6.3	2.5	1.5	1.5	10.8
ELL4-M3-M	4	M3×0.5	12.0	24.5	16.4	28.4	3.0	10	8.0×8.8	8.0	1.5	1.5	2.0	10.8
ELL4-M5-M	4	M5×0.8	12.0	25.0	16.4	28.9	3.5	10	8.0×8.8	8.0	2.5	2.5	3.5	11.3
ELL4-R1/8-M	4	R1/8	12.0	28.0	17.5	31.9	8.0	10	10.0×11.0	8.0	5.0	3.0	4.0	14.9
ELL6-M5-M	6	M5×0.8	13.7	26.0	18.1	30.9	3.5	11	8.0×8.8	10.2	2.5	2.5	4.5	11.9
ELL6-R1/8-M	6	R1/8	13.7	29.0	19.2	33.9	8.0	11	10.0×11.0	10.2	5.0	4.0	8.0	15.4

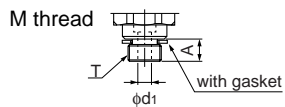
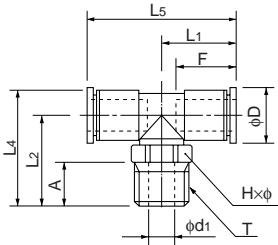


Tee

●Millimeter size type



Product number	Applicable tube outer diameter (mm)	T Thread size (M,R)	L ₁ (mm)	L ₂ (mm)	L ₄ (mm)	L ₅ (mm)	A (mm)	F Tube insertion length (mm)	H×φ Width across flat (mm)	D (mm)	d ₁ (mm)	Min. inner diameter (mm)	Effective cross-sectional area (mm ²)	Weight (g)
ET3-M3-M	3	M3×0.5	10.7	12.0	15.0	21.3	3.0	9	5.5×6.0	6.3	1.5	1.5	1.5	1.5
ET3-M5-M	3	M5×0.8	10.7	13.0	16.0	21.3	3.5	9	7.0×7.7	6.3	2.5	1.5	1.5	2.6
ET4-M3-M	4	M3×0.5	12.5	12.5	16.4	25.0	3.0	10	8.0×8.8	8.0	1.5	1.5	2.0	2.8
ET4-M5-M	4	M5×0.8	12.5	13.0	16.9	25.0	3.5	10	8.0×8.8	8.0	2.5	2.5	3.5	3.3
ET4-R1/8-M	4	R1/8	12.5	16.0	19.9	25.0	8.0	10	10.0×11.0	8.0	5.0	3.0	4.0	6.9
ET6-M5-M	6	M5×0.8	14.2	14.0	18.9	28.4	3.5	11	8.0×8.8	10.2	2.5	2.5	4.5	4.3
ET6-R1/8-M	6	R1/8	14.2	17.0	21.9	28.4	8.0	11	10.0×11.0	10.2	5.0	4.0	8.0	7.9



Service tee

●Millimeter size type



Product number	Applicable tube outer diameter (mm)	T Thread size (M,R)	L ₁ (mm)	L ₂ (mm)	L ₆ (mm)	L ₇ (mm)	L ₈ (mm)	A (mm)	F Tube insertion length (mm)	H×φ Width across flat (mm)	D (mm)	d ₁ (mm)	Min. inner diameter (mm)	Effective cross-sectional area (mm ²)	Weight (g)
EST3-M3-M	3	M3×0.5	10.7	12.0	10.7	22.7	13.7	3.0	9	5.5×6.0	6.3	1.5	1.5	1.5	1.5
EST3-M5-M	3	M5×0.8	10.7	13.0	10.7	23.7	14.6	3.5	9	7.0×7.7	6.3	2.5	1.5	1.5	2.6
EST4-M3-M	4	M3×0.5	12.5	12.5	12.5	25.0	16.9	3.0	10	8.0×8.8	8.0	1.5	1.5	2.0	2.8
EST4-M5-M	4	M5×0.8	12.5	13.0	12.5	25.5	16.9	3.5	10	8.0×8.8	8.0	2.5	2.5	3.5	3.3
EST4-R1/8-M	4	R1/8	12.5	16.0	12.5	28.5	18.0	8.0	10	10.0×11.0	8.0	5.0	3.0	4.0	6.9
EST6-M5-M	6	M5×0.8	14.2	14.0	14.2	28.2	19.1	3.5	11	8.0×8.8	10.2	2.5	2.5	4.5	4.4
EST6-R1/8-M	6	R1/8	14.2	17.0	14.2	31.2	19.7	8.0	11	10.0×11.0	10.2	5.0	4.0	8.0	7.9

