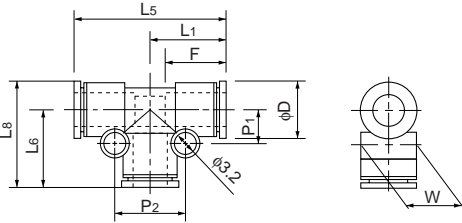


Union tee



●Millimeter size type

Product number	Applicable tube outer diameter (mm)	L ₁ (mm)	L ₅ (mm)	L ₆ (mm)	L ₈ (mm)	P ₁ (mm)	P ₂ (mm)	F Tube insertion length (mm)	D (mm)	W (mm)	Min. inner diameter (mm)	Effective cross-sectional area (mm ²)	Weight (g)
EUT3-M	3	10.7	21.4	10.7	13.7	4.1	8.2	9	6.3	6.0	2.0	2.0	1.2
EUT4-M	4	12.5	25.0	12.5	16.4	5.0	10.0	10	8.0	8.0	3.0	3.5	3.4
EUT6-M	6	14.2	28.4	14.2	19.1	6.5	13.0	11	10.2	10.0	4.0	8.0	3.5

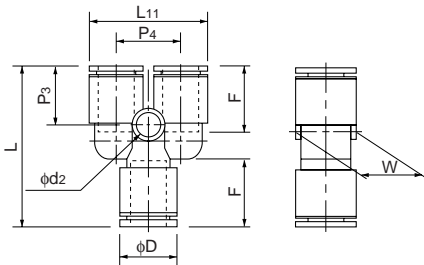


Y union



●Millimeter size type

Product number	Applicable tube outer diameter (mm)	L (mm)	L ₁₁ (mm)	F Tube insertion length (mm)	P ₃ (mm)	P ₄ (mm)	W (mm)	D (mm)	d ₂ (mm)	Min. inner diameter (mm)	Effective cross-sectional area (mm ²)	Weight (g)
EYB3-M	3	21.9	13.0	9	9.0	7.0	6.0	6.3	2.0	2.0	2.0	1.2
EYB4-M	4	24.0	16.7	10	9.0	9.0	8.0	8.0	3.2	3.0	2.0	3.4
EYB6-M	6	27.4	20.7	11	10.2	11.0	10.0	10.2	3.2	4.0	8.0	3.5



Blank plug



See the PushOne E series (P.65) for the product number and part sizes.

Nipple



See the PushOne E series (P.65) for the product number and part sizes.