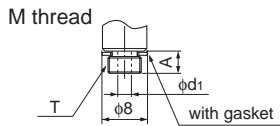
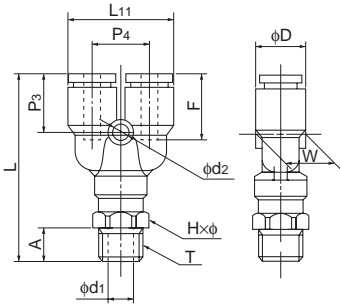


Y joint



●Millimeter size type

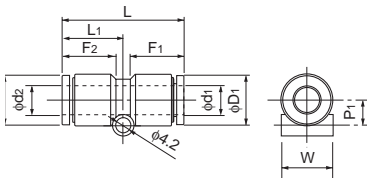
Product number	Applicable tube outer diameter (mm)	T Thread size (M,R)	L (mm)	L ₁₁ (mm)	A (mm)	F Tube insertion length (mm)	H×φ Width across flat (mm)	P ₃ (mm)	P ₄ (mm)	W (mm)	D (mm)	d ₁ (mm)	d ₂ (mm)	Min. inner diameter (mm)	Effective cross-sectional area (mm ²)	Weight (g)
EY4-M5	4	M5×0.8	37.9	20.8	4.0	13	10.0×11.0	13.5	11.0	9.8	9.8	2.0	3.2	2.0	2.5	9.0
EY4-PT1/8	4	R1/8	40.4	20.8	8.0	13	10.0×11.0	13.5	11.0	9.8	9.8	5.0	3.2	3.0	3.5	11.0
EY4-PT1/4	4	R1/4	44.4	20.8	11.0	13	14.0×15.4	13.5	11.0	9.8	9.8	7.0	3.2	3.0	3.5	18.0
EY6-M5	6	M5×0.8	41.3	24.8	4.0	15	12.0×13.0	14.7	12.2	12.5	12.6	2.0	4.2	2.0	2.5	13.0
EY6-PT1/8	6	R1/8	43.8	24.8	8.0	15	12.0×13.0	14.7	12.2	12.5	12.6	5.0	4.2	5.0	9.0	15.0
EY6-PT1/4	6	R1/4	47.8	24.8	11.0	15	14.0×15.4	14.7	12.2	12.5	12.6	7.0	4.2	5.0	9.0	22.0
EY6-PT3/8	6	R3/8	48.8	24.8	12.0	15	17.0×18.5	14.7	12.2	12.5	12.6	9.0	4.2	5.0	9.0	30.0
EY8-PT1/8	8	R1/8	46.9	28.8	8.0	16	14.0×15.4	16.4	14.2	14.6	14.6	5.0	4.2	5.0	17.5	20.0
EY8-PT1/4	8	R1/4	50.9	28.8	11.0	16	14.0×15.4	16.4	14.2	14.6	14.6	7.0	4.2	7.0	20.0	25.0
EY8-PT3/8	8	R3/8	51.9	28.8	12.0	16	17.0×18.5	16.4	14.2	14.6	14.6	9.0	4.2	7.0	20.0	33.0
EY10-PT1/4	10	R1/4	55.9	35.0	11.0	19	17.0×18.5	18.4	17.5	17.5	17.5	7.0	4.2	7.0	27.5	33.0
EY10-PT3/8	10	R3/8	56.9	35.0	12.0	19	17.0×18.5	18.4	17.5	17.5	17.5	9.0	4.2	9.0	28.0	41.0
EY10-PT1/2	10	R1/2	60.9	35.0	15.0	19	22.0×24.5	18.4	17.5	17.5	17.5	12.0	4.2	9.0	28.0	60.0
EY12-PT1/4	12	R1/4	60.8	40.0	11.0	20	19.0×21.0	20.3	20.0	20.0	20.0	7.0	4.2	7.0	34.5	47.0
EY12-PT3/8	12	R3/8	61.8	40.0	12.0	20	19.0×21.0	20.3	20.0	20.0	20.0	9.0	4.2	9.0	40.0	52.0
EY12-PT1/2	12	R1/2	65.8	40.0	15.0	20	22.0×24.5	20.3	20.0	20.0	20.0	12.0	4.2	10.0	40.0	70.0
EY16-PT3/8	16	R3/8	78.6	55.0	12.0	27	24.0×27.0	26.6	27.5	27.5	28.0	11.0	4.2	11.0	70.0	103.0
EY16-PT1/2	16	R1/2	81.6	55.0	15.0	27	24.0×27.0	26.6	27.5	27.5	28.0	12.0	4.2	12.0	71.0	117.0

●Inch size type

Product number	Applicable tube outer diameter (inch)	T Thread size (R)	L (mm)	L ₁₁ (mm)	A (mm)	F Tube insertion length (mm)	H×φ Width across flat (mm)	P ₃ (mm)	P ₄ (mm)	W (mm)	D (mm)	d ₁ (mm)	d ₂ (mm)	Min. inner diameter (mm)	Effective cross-sectional area (mm ²)	Weight (g)
EY1/4-PT1/8	1/4	R1/8	43.4	24.7	8.0	15	12.0×13.0	14.4	12.2	12.5	13.0	5.0	4.2	5.0	10.5	15.0
EY1/4-PT1/4	1/4	R1/4	47.4	24.7	11.0	15	14.0×15.4	14.4	12.2	12.5	13.0	7.0	4.2	5.0	10.5	22.0
EY5/16-PT1/8	5/16	R1/8	46.8	28.7	8.0	16	14.0×15.4	16.3	14.2	14.5	15.0	5.0	4.2	5.0	17.5	20.0
EY5/16-PT1/4	5/16	R1/4	50.8	28.7	11.0	16	14.0×15.4	16.3	14.2	14.5	15.0	7.0	4.2	7.0	20.0	25.0
EY5/16-PT3/8	5/16	R3/8	51.9	35.0	12.0	19	17.0×18.5	18.1	17.5	17.5	18.0	9.0	4.2	7.0	—	—
EY3/8-PT1/4	3/8	R1/4	55.6	35.0	11.0	19	17.0×18.5	18.1	17.5	17.5	18.0	7.0	4.2	7.0	26.0	33.0
EY3/8-PT3/8	3/8	R3/8	56.6	35.0	12.0	19	17.0×18.5	18.1	17.5	17.5	18.0	9.0	4.2	9.0	26.0	41.0
EY1/2-PT1/4	1/2	R1/4	62.5	42.0	11.0	21	19.0×21.0	20.5	21.0	21.0	21.5	7.0	4.2	7.0	37.0	47.0
EY1/2-PT3/8	1/2	R3/8	63.5	42.0	12.0	21	19.0×21.0	20.5	21.0	21.0	21.5	9.0	4.2	9.0	48.0	52.0
EY1/2-PT1/2	1/2	R1/2	67.5	42.0	15.0	21	22.0×24.0	20.5	21.0	21.0	21.5	12.0	4.2	11.0	48.0	70.0

☞ The inch size type is not plated.

Union connector



●Millimeter size type

Product number	d ₁ Applicable tube outer diameter (mm)	d ₂ Applicable tube outer diameter (mm)	L (mm)	L ₁ (mm)	P ₁ (mm)	F ₁ Tube insertion length (mm)	F ₂ Tube insertion length (mm)	D ₁ (mm)	D ₂ (mm)	W (mm)	Min. inner diameter (mm)	Effective cross-sectional area (mm ²)	Weight (g)
EUC4	4	4	31.8	15.9	5.0	13	13	9.8	9.8	9.7	4.0	3.5	4.0
EUC4-6	4	6	32.7	16.8	6.0	13	15	9.8	12.6	12.5	3.0	3.5	5.0
EUC6	6	6	33.6	16.8	6.0	15	15	12.6	12.6	12.5	6.0	12.5	6.0
EUC6-8	6	8	34.7	17.9	7.0	15	16	12.6	14.6	14.5	5.0	11.5	7.0
EUC8	8	8	35.8	17.9	7.0	16	16	14.6	14.6	14.5	8.0	28.0	8.0
EUC8-10	8	10	38.8	20.9	8.5	16	19	14.6	17.5	17.5	7.0	31.5	11.0
EUC10	10	10	41.7	20.9	8.5	19	19	17.5	17.5	17.5	14.0	45.0	14.0
EUC10-12	10	12	42.7	21.8	9.8	19	20	17.5	20.0	20.0	9.0	53.0	17.0
EUC12	12	12	43.6	21.8	9.8	20	27	20.0	20.0	20.0	19.0	67.0	19.0
EUC16	16	16	56.2	28.1	13.8	27	27	28.0	28.0	27.5	48.0	110.0	48.0

●Inch size type

Product number	d ₁ Applicable tube outer diameter (inch)	d ₂ Applicable tube outer diameter (inch)	L (mm)	L ₁ (mm)	P ₁ (mm)	F ₁ Tube insertion length (mm)	F ₂ Tube insertion length (mm)	D ₁ (mm)	D ₂ (mm)	W (mm)	Min. inner diameter (mm)	Effective cross-sectional area (mm ²)	Weight (g)
EUC1/4	1/4	1/4	32.8	16.4	6.0	15	15	13.0	13.0	12.5	5.0	12.5	6.0
EUC5/16	5/16	5/16	35.6	17.8	7.0	16	16	15.0	15.0	14.5	7.0	28.0	8.0
EUC3/8	3/8	3/8	41.2	20.6	8.5	19	19	18.0	18.0	17.5	9.0	35.0	14.0
EUC1/2	1/2	1/2	43.9	22.0	10.3	21	21	21.5	21.5	21.0	11.0	65.0	19.0

☞ The inch size type is not plated.