

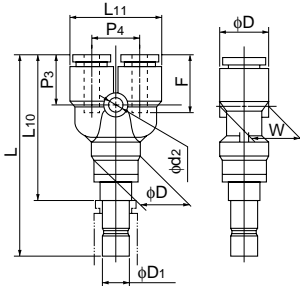
Y plug



●Millimeter size type

Product number	Applicable tube outer diameter (mm)	D ₁ Insertion part diameter (mm)	L (mm)	L ₁₀ (mm)	L ₁₁ (mm)	F Tube insertion length (mm)	P ₃ (mm)	P ₄ (mm)	W (mm)	D (mm)	d ₂ (mm)	Min. inner diameter (mm)	Effective cross-sectional area (mm ²)	Weight (g)
EYA4-4	4	4	48.4	32.4	20.8	13	13.5	11.0	9.8	9.8	3.2	3.0	3.5	8.0
EYA6-6	6	6	52.8	36.3	24.8	15	14.7	12.2	12.6	12.6	4.2	4.5	9.0	14.0
EYA8-8	8	8	56.4	39.4	28.8	16	16.4	14.2	14.6	14.6	4.2	6.0	18.0	19.0
EYA10-10	10	10	63.9	45.4	35.0	19	18.4	17.5	17.5	17.5	4.2	8.0	28.0	31.0
EYA12-12	12	12	70.3	50.3	40.0	20	20.3	20.0	20.0	20.0	4.2	10.0	40.0	42.0

⚠ Caution: Once a Y plug elbow is inserted into a PushOne part, the part cannot be used to connect a tube.

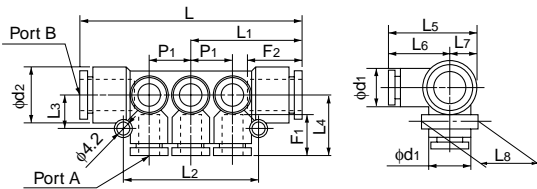


Manifold A type



●Millimeter size type

Product number	Applicable tube outer diameter (mm)		A Number of ports	L (mm)	L ₁ (mm)	L ₂ (mm)	L ₃ (mm)	L ₄ (mm)	L ₅ (mm)	L ₆ (mm)	L ₇ (mm)	L ₈ (mm)	F ₁ Tube insertion length (mm)	F ₂ Tube insertion length (mm)	P ₁ (mm)	d ₁ (mm)	d ₂ (mm)	Effective cross-sectional area (mm ²)	Weight (g)
	Port A	Port B																	
EMA4-8-6	4	8	6	61.0	30.5	36.0	10.0	18.2	27.5	18.2	9.3	18.5	13	16	10.6	9.7	14.5	—	—
EMA4-8-10	4	8	10	82.2	41.1	57.2	10.0	18.2	27.5	18.2	9.3	18.5	13	16	10.6	9.7	14.5	—	—
EMA6-10-6	6	10	6	73.7	36.9	44.0	11.5	20.2	29.5	20.2	9.3	18.5	15	19	13.0	12.5	17.5	—	—
EMA6-10-10	6	10	10	99.7	49.9	70.0	11.5	20.2	29.5	20.2	9.3	18.5	15	19	13.0	12.5	17.5	—	—
EMA8-12-6	8	12	6	83.2	41.6	51.0	12.5	22.1	32.6	22.1	10.5	21.0	16	20	15.5	14.5	20.0	—	—
EMA8-12-10	8	12	10	114.2	57.1	82.0	12.5	22.1	32.6	22.1	10.5	21.0	16	20	15.5	14.5	20.0	—	—



Manifold B type



●Millimeter size type

Product number	Applicable tube outer diameter (mm)		Thread size (Rc)	A Number of ports	L (mm)	L ₁ (mm)	L ₂ (mm)	L ₃ (mm)	L ₄ (mm)	L ₅ (mm)	L ₆ (mm)	L ₇ (mm)	L ₈ (mm)	F ₁ Tube insertion length (mm)	P ₁ (mm)	d ₁ (mm)	H×φ Width across flat (mm)	Effective cross-sectional area (mm ²)	Weight (g)
	Port A	Port B																	
EMB4-1/4-6	4	Rc1/4	6	84.0	42.0	36.0	10.0	18.2	27.5	18.2	9.3	18.5	13	10.6	9.7	17.0×18.5	—	—	
EMB4-1/4-10	4	Rc1/4	10	105.2	52.6	57.2	10.0	18.2	27.5	18.2	9.3	18.5	13	10.6	9.7	17.0×18.5	—	—	
EMB6-1/4-6	6	Rc1/4	6	96.4	48.2	44.0	11.5	20.2	29.5	20.2	9.3	18.5	15	13.0	12.5	17.0×18.5	—	—	
EMB6-1/4-10	6	Rc1/4	10	122.4	61.2	70.0	11.5	20.2	29.5	20.2	9.3	18.5	15	13.0	12.5	17.0×18.5	—	—	
EMB8-3/8-6	8	Rc3/8	6	105.6	52.8	51.0	12.5	22.1	32.6	22.1	10.5	21.0	16	15.5	14.5	19.0×21.0	—	—	
EMB8-3/8-10	8	Rc3/8	10	136.6	68.3	82.0	12.5	22.1	32.6	22.1	10.5	21.0	16	15.5	14.5	19.0×21.0	—	—	

